

# TRUSS DETAILS (DESIGN)

Job Ref: 802117s3p2

Truss Reference : S1 (Single truss)

Date created: 03 Mar 201  
Page No: '

Truss type : Standard

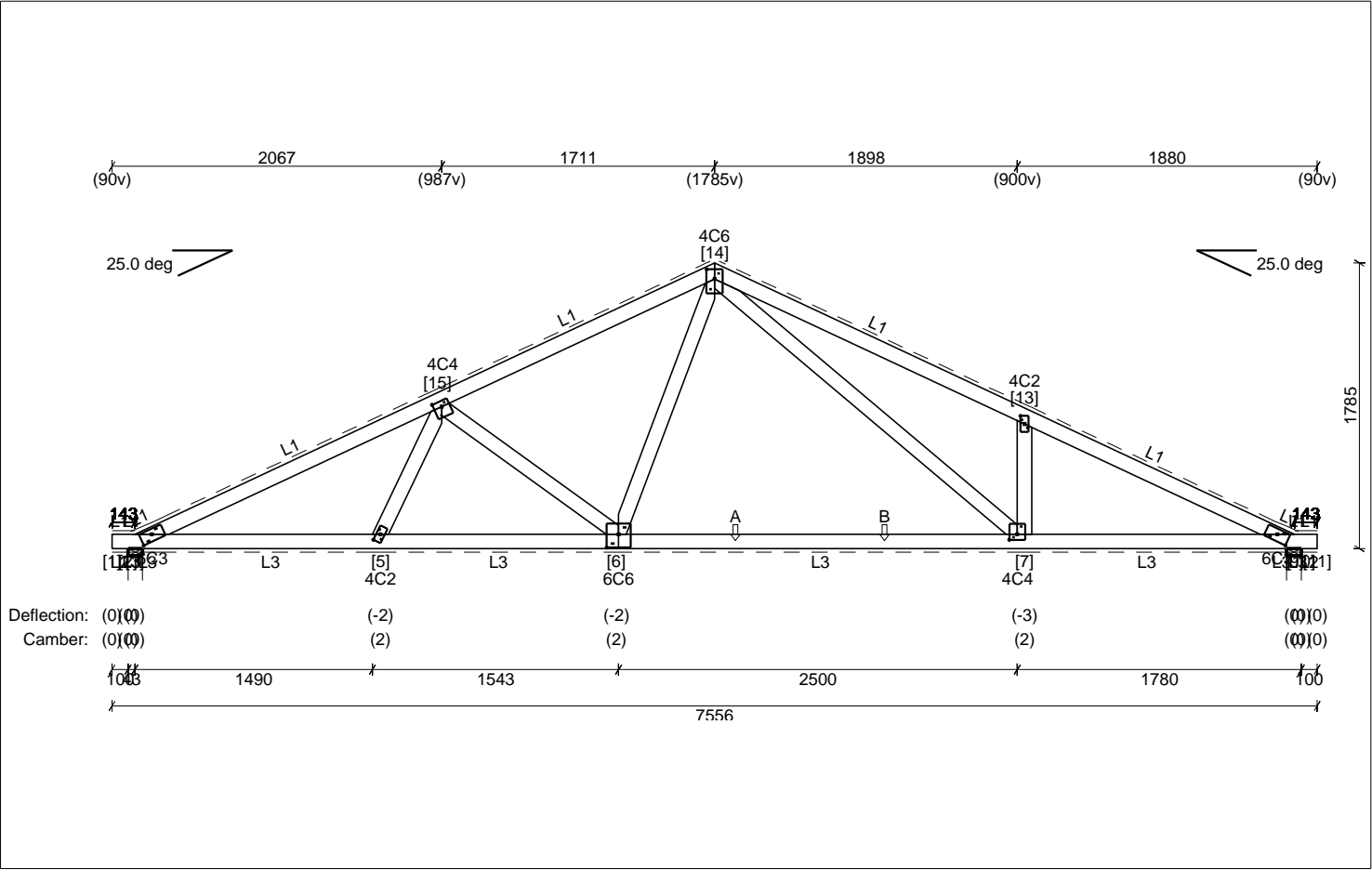
No. plies : 1x35mm

Design spacing : 1000mm

No. of : 10

Building Standard : NCC-2012

Structural Category : 1



## Linings

- L1: Sheet steel (0.48mm) (5.6 kg/sq.m).  
Battens @ 900mm.  
L2: Fibrecement (6mm) (9.5 kg/sq.m).  
Battens @ 600mm.  
L3: 13mm plasterboard (8.5 kg/sq.m).  
Battens @ 450mm.

## Timber

- Top chords 1 / 90x35 MGP10T2 uno  
Bottom chords 1 / 90x35 MGP12T2 uno  
Webs 1 / 90x35 MGP10T2 uno

## Supported trusses / Applied point loads

A : Applied (Gc=0.30kN) (3908) B : Applied (Gc=0.30kN) (4843)  
Note: numbers in brackets denote distance from left of truss.

## Notes

1. Deflection = permanent load deflection including creep if timber truss.
2. Overhang condition: Metal fascia.
3. Refer to Pryda Installation Guide for full bracing details.
4. Refer to layout for overall truss bracing.
5. Refer to Design Report for Applied point loads other than G.

## Major supports and factored reactions

Joint	Type	Width	Perm.	Max. down (LC)	Uplift	Tie-down	Connector
2	Wall Ext	90	1.6 kN	3.1 kN (Gc+Wd3)	-1.8 kN	-	-
10	Wall Ext	90	1.8 kN	3.2 kN (Gc+Wd3)	-1.7 kN	-	-